



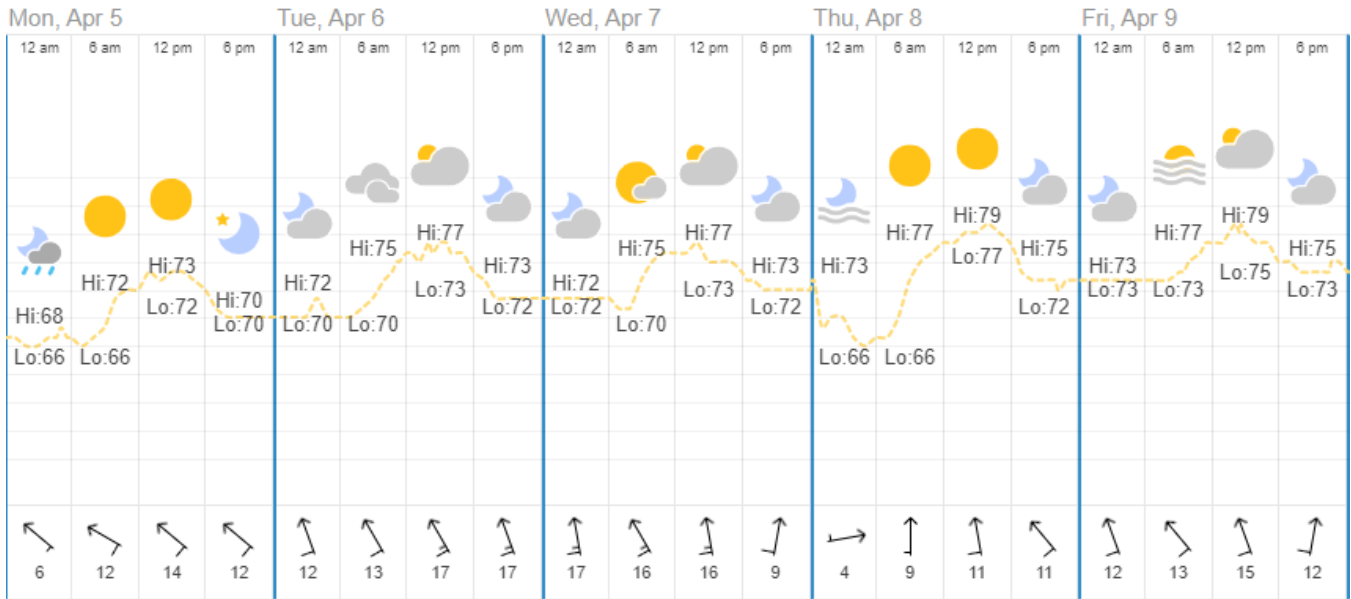
# MOODY METHODIST CHURCH

## 2021 MOODY STEEPLE CLADDING REPAIRS

### WEEKLY FIELD REPORT No. 12

### WEEK OF 4/5/2021

#### Weekly Weather



#### Date: Monday, April 05, 2021

**On Site:** Coltzer Company, LLC  
 RB Hash  
**Temperature – Low/High (°F):** 66/73  
**Rain (Total Inches):** 0.03"  
**Max Wind Speed(mph):** 14 SE

#### Field Note: Comments & Photographs:

**04 05-01** *Coltzer Company, LLC* on site to observe steeple repairs progress.

**04 05-02** *RB Hash* continues installing corner edge pieces at the top of the struts of the base tier. The tops of the struts are coated with Parapro Flashing Resin prior to installation of the corner edge pieces. The corner edge pieces are installed using stainless steel clips and screws. The floor of the belfry around the hatch is coated in Parapro Flashing Resin. Copper flashing is installed around the roof hatch in the belfry. *(See photo01-06)*





Photo01: Corner Edge Pieces Fabricated Before Installation



Photo02: Corner Edge Piece Installed, Top of Strut Coated in Liquid Flashing



Photo03: Corner of Hatch Copper Soldered Together



Photo04: Parapro Flashing Resin Applied at Floor of Belfry

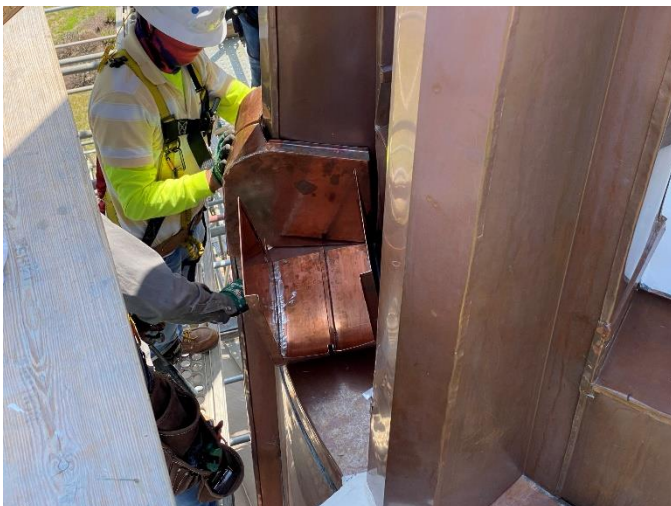


Photo05: Corner Edge Pieces Installed

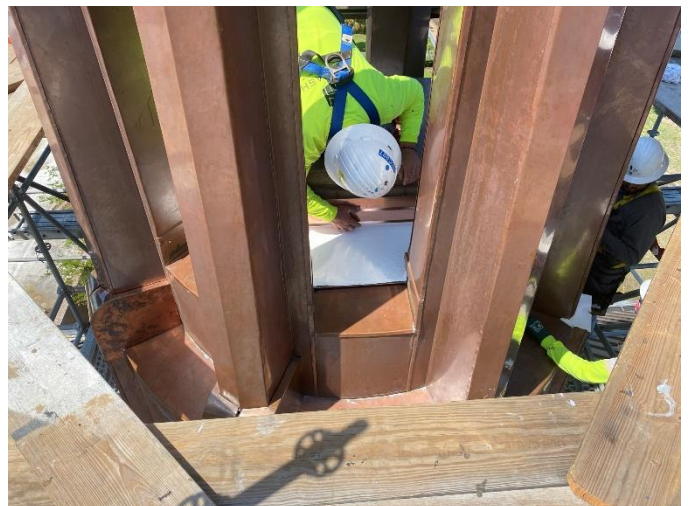


Photo06: Copper Flashing Fitted to Edge of Hatch



Date: Tuesday, April 06, 2021

On Site: Coltzer Company, LLC  
RB Hash

Temperature – Low/High (°F): 70/77

Rain (Total Inches): 0.00

Max Wind Speed(mph): 17 SSE

Field Note: Comments & Photographs:

04 06-01 *Coltzer Company, LLC* on site to observe steeple repairs progress.

04 06-02 *RB Hash* continues and completes installing copper flashing around the hatch in the belfry. Flashing is installed at the sides of the base of the mid-tier struts. (see photo07-10)



Photo07: Overview of Work in Progress



Photo08: Copper Flashing is Installed Around Hatch



Photo09: Copper Flashing Installed on the Side of the Base of the Mid-Tier Struts



Photo10: Excess Copper Removed from Panel

**Date: Wednesday, April 07, 2021**

<b>On Site:</b>	Coltzer Company, LLC Betco Scaffolds	<b>Temperature – Low/High (°F):</b>	70/77
		<b>Rain (Total Inches):</b>	0.00
		<b>Max Wind Speed(mph):</b>	17 S

**Field Note:**      **Comments & Photographs:**

**04 07-01**      *Coltzer Company, LLC* on site to observe steeple repairs progress.

**04 07-02**      *Betco Scaffolds* begins dismantling scaffolding around the steeple. *(see photo11-14)*



**Photo11: Betco Scaffolds Begins Disassembling Scaffolding**



**Photo12: Scaffolding is Disassembled**



**Photo13: Scaffolding Removed from North Side of Steeple**



**Photo14: Scaffolding Disassembled**



**Date:** Thursday, April 08, 2021

**On Site:** Coltzer Company, LLC  
Betco Scaffolds

**Temperature – Low/High (°F):** 66/79

**Rain (Total Inches):** 0.00"

**Max Wind Speed(mph):** 11 SE

**Field Note:** **Comments & Photographs:**

**04 08-01** *Coltzer Company, LLC* was onsite to observe steeple repair progress.

**04 08-02** *Betco Scaffolds* continues dismantling scaffolding around the steeple. (*see photo15-18*)



**Photo15: Overview of Work**



**Photo16: Scaffold Materials are Loaded into the Fork Lift**



**Photo17: Scaffolding Disassembled**



**Photo18: Overview of Work**



**Date: Friday, April 09, 2021**

**On Site:** Coltzer Company, LLC  
Betco Scaffolds

**Temperature – Low/High (°F):** 73/79

**Rain (Total Inches):** 0.00"

**Max Wind Speed(mph):** 15 SSE

**Field Note:** **Comments & Photographs:**

**04 09-01** *Coltzer Company, LLC* was onsite to observe steeple repair progress.

**04 09-02** *Betco Scaffolds* continues and completes dismantling and removing scaffolding and materials from the jobsite. (See photo19-22)



**Photo19: Scaffolding Disassembled and Materials Organized**



**Photo20: Scaffold Materials are Tied Up for Pick Up**



**Photo21: Scaffold Materials are Removed from Job Site**



**Photo22: Overview of Work**

**DISTRIBUTION LIST**

NAME	REPRESENTING	PHONE NUMBER	E-MAIL
Bill Coltzer	Coltzer Company, LLC	409-740-0090	bcoltzer@z6consulting.com
Lidija Bikova	Zero/Six Consulting, LLC	409-740-0090	LBikova@z6consulting.com
Richard Parks	Coltzer Company, LLC	470-314-2821	<a href="mailto:rparks@z6consulting.com">rparks@z6consulting.com</a>
Sam Caminade	Moody Church	409-771-7785	sam@moody.com
Bryan Hash	R.B. Hash Roofing		rbh@rbhash.com
John Garza	R.B. Hash Roofing		jgarza@rbhash.com
Justin Wenner	Betco Scaffolding		<a href="mailto:justin.wenner@scaffold.com">justin.wenner@scaffold.com</a>
Steve Grimes	Betco Scaffolding		<a href="mailto:steve.grimes@scaffold.com">steve.grimes@scaffold.com</a>

*The preceding represents Coltzer Company's understanding of the principal matters discussed and/or observed. Written comments with regard to the content of this report should be received by Coltzer Co. within three days from date of issue. After that date, these notes shall stand as a final accounting of the items discussed and/or observed.*