



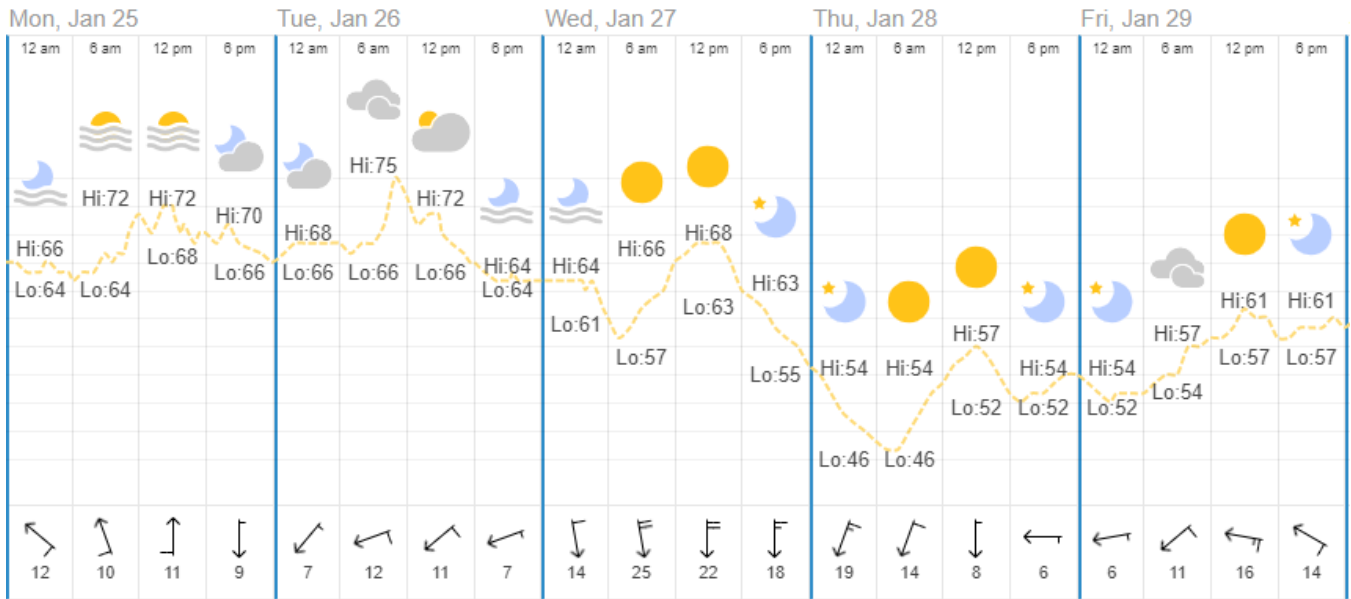
# MOODY METHODIST CHURCH

## 2021 MOODY STEEPLE CLADDING REPAIRS

### WEEKLY FIELD REPORT No. 02

### WEEK OF 1/25/2021

#### Weekly Weather



Date: Monday, January 25, 2021

**On Site:** Coltzer Company, LLC  
Betco Scaffolds

**Temperature – Low/High (°F):** 64/72

**Rain (Total Inches):** 0.00"

**Max Wind Speed(mph):** 12 SE

**Field Note:** **Comments & Photographs:**

**01 25-01** *Coltzer Company, LLC* on site to observe steeple repairs progress.

**01 25-02** *Betco Scaffolds* continues erecting scaffolding on the south side of the sanctuary. Scaffolding begins around the steeple on the roof.



Date: Tuesday, January 26, 2021

On Site: Coltzer Company, LLC  
Betco Scaffolding

Temperature – Low/High (°F): 64/75  
Rain (Total Inches): 0.00  
Max Wind Speed(mph): 12 ENE

Field Note: Comments & Photographs:

01 26-01 **Coltzer Company, LLC** on site to observe steeple repairs progress.

01 26-02 **Betco Scaffolding** continues erecting scaffolding on the south side of the sanctuary. Scaffolding begins around the steeple on the roof. *(see photo01-04)*



Photo01: Scaffolding Being Assembled on Roof



Photo02: Scaffolding Being Assembled



Photo03: Scaffolding Being Assembled



Photo04: Scaffolds Assembled Around Steeple



Date: Wednesday, January 27, 2021

On Site:	Coltzer Company, LLC	Temperature – Low/High (°F):	55/68
	Betco Scaffolding	Rain (Total Inches):	0.00
		Max Wind Speed(mph):	25 N

Field Note: Comments & Photographs:

01 27-01 *Coltzer Company, LLC* on site to observe steeple repairs progress.

01 27-02 *Betco Scaffolding* continues erecting scaffolding on the south side of the sanctuary. Scaffolding is erected around the steeple to the north side of the roof. (*see photo05-07*)



Photo05: Telescopic Boom Lift Brought on Site



Photo06: Scaffolding Being Assembled

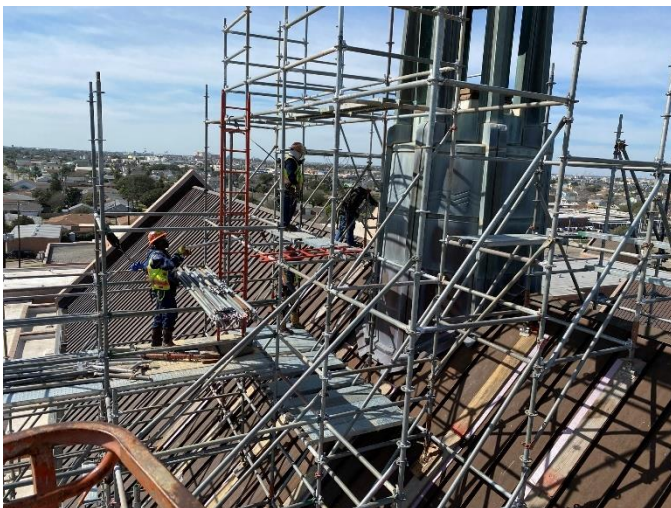


Photo07: Scaffolding Being Assembled



Date: Thursday, January 28, 2021

On Site: Coltzer Company, LLC  
RB Hash  
Betco Scaffolding

Temperature – Low/High (°F): 46/57  
Rain (Total Inches): 0.00"  
Max Wind Speed(mph): 19 NNE

Field Note: Comments & Photographs:

01 28-01 **Coltzer Company, LLC** prepares to start on steeple repairs, inspects condition of copper cladding.

01 28-02 **RB Hash** on site to inspect condition of steeple. (*see photo08*)

01 28-02 **Betco Scaffolding** continues erecting scaffolding on the south side of the sanctuary. Scaffolding is complete around the steeple. (*see photo09-11*)



Photo08: RB Hash Foreman Inspecting Copper Conditions



Photo09: Scaffolding Near Completion

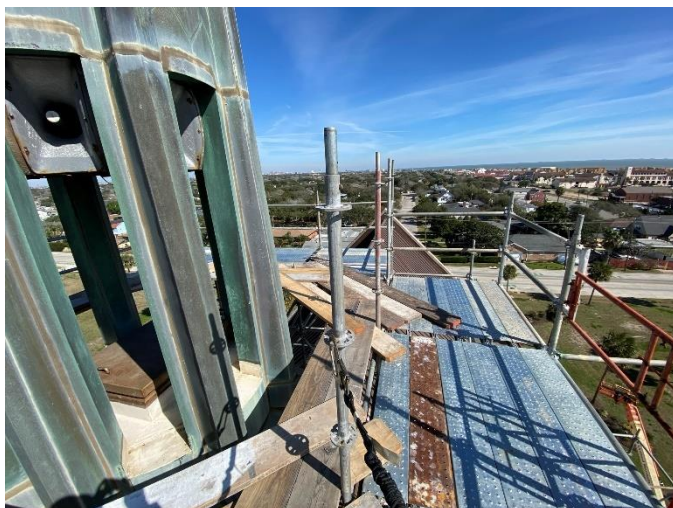


Photo10: Completed Scaffolding



Photo11: Completed Scaffolding

**Date: Friday, January 29, 2021**

<b>On Site:</b>	Coltzer Company, LLC	<b>Temperature – Low/High (°F):</b>	46/63
		<b>Rain (Total Inches):</b>	0.00
		<b>Max Wind Speed(mph):</b>	17 S

**Field Note:**      **Comments & Photographs:**  
**01 29-01**      **Coltzer Company, LLC** prepares to begin steeple repairs.

#### DISTRIBUTION LIST

NAME	REPRESENTING	PHONE NUMBER	E-MAIL
Bill Coltzer	Coltzer Company, LLC	409-740-0090	bcoltzer@z6consulting.com
Lidija Bikova	Zero/Six Consulting, LLC	409-740-0090	LBikova@z6consulting.com
Richard Parks	Coltzer Company, LLC	470-314-2821	<a href="mailto:rparks@z6consulting.com">rparks@z6consulting.com</a>
Sam Caminade	Moody Church	409-771-7785	sam@moody.com
Bryan Hash	R.B. Hash Roofing		rbh@rbhash.com
John Garza	R.B. Hash Roofing		jgarza@rbhash.com
Justin Wenner	Betco Scaffolding		<a href="mailto:justin.wenner@scaffold.com">justin.wenner@scaffold.com</a>
Steve Grimes	Betco Scaffolding		<a href="mailto:steve.grimes@scaffold.com">steve.grimes@scaffold.com</a>

*The preceding represents Coltzer Company's understanding of the principal matters discussed and/or observed. Written comments with regard to the content of this report should be received by Coltzer Co. within three days from date of issue. After that date, these notes shall stand as a final accounting of the items discussed and/or observed.*

